

a.Download firmware upgrade tool

Windows OS:

<https://www.dropbox.com/s/zwkt6y9svklpkyl/Pantum%20P2200-P2500%20Series%20Windows%20FirmwareUpgrade%20Tool%20V1.0.zip?dl=0>

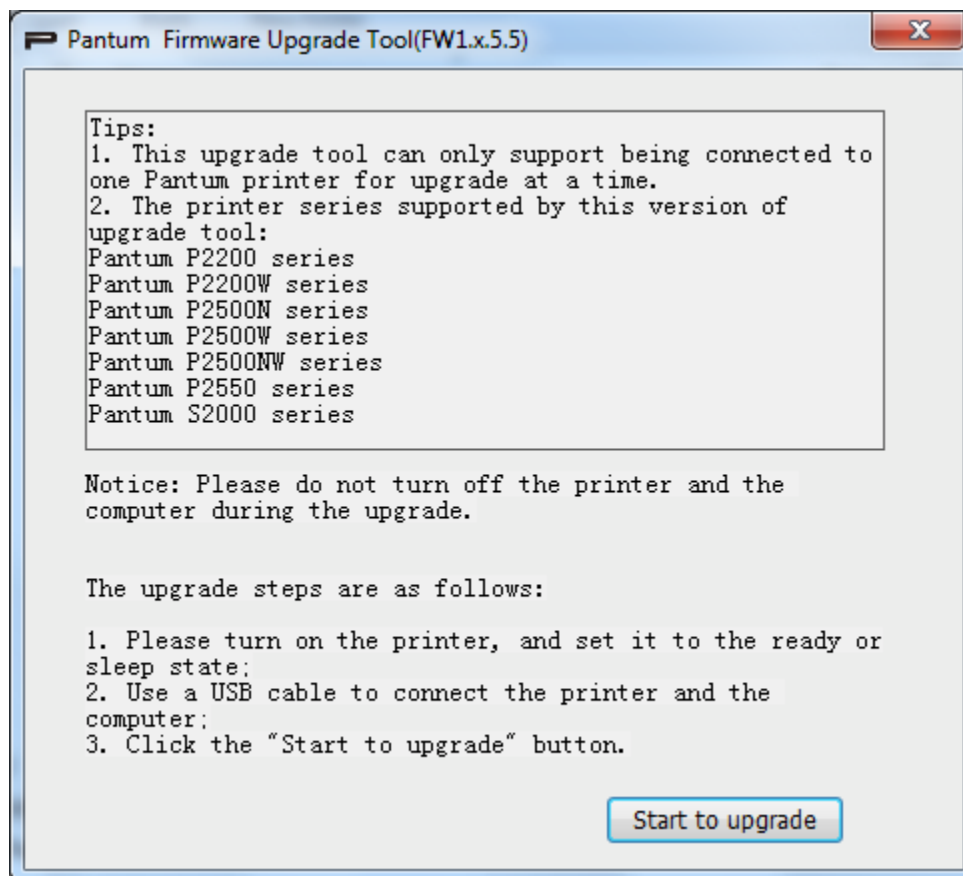
MAC OS:

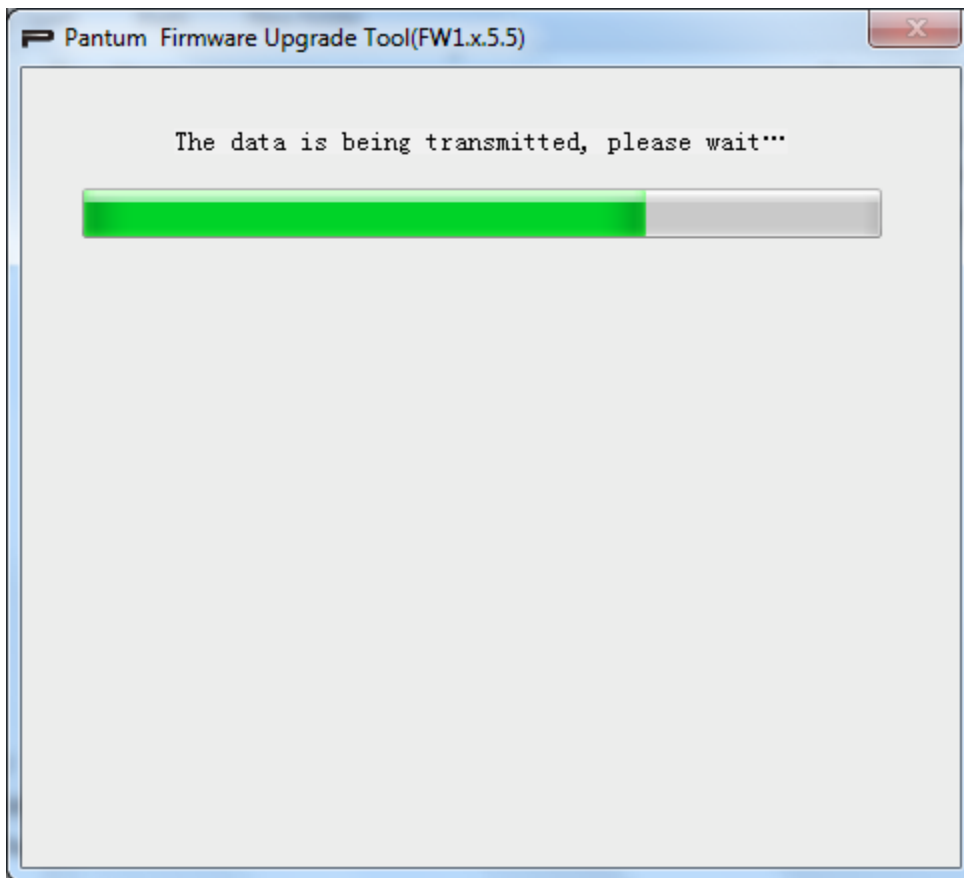
<https://www.dropbox.com/s/fcnv4nhc51bpsop/Pantum%20P2200-P2500%20Series%20MAC%20FirmwareUpgrade%20Tool%20V1.0.rar?dl=0>

b.Update firmware, follow these steps:

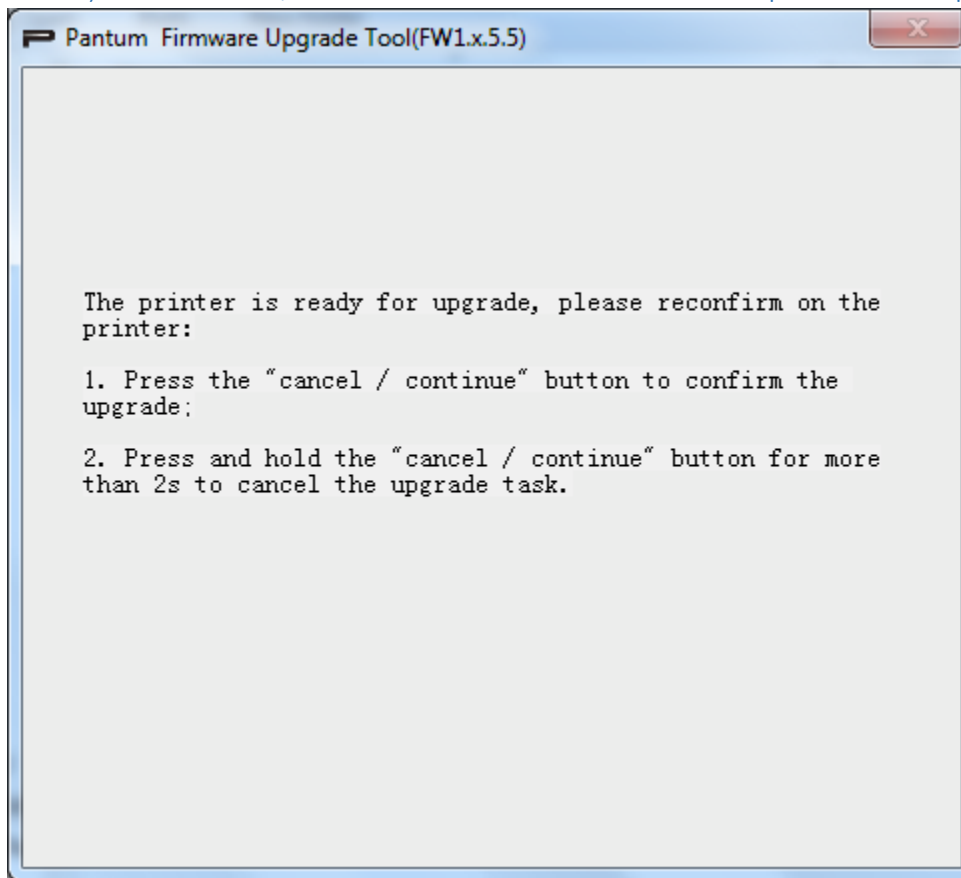
- a) turn on the printer
- b) use a USB cable connect the printer and computer
- c) click “start” button

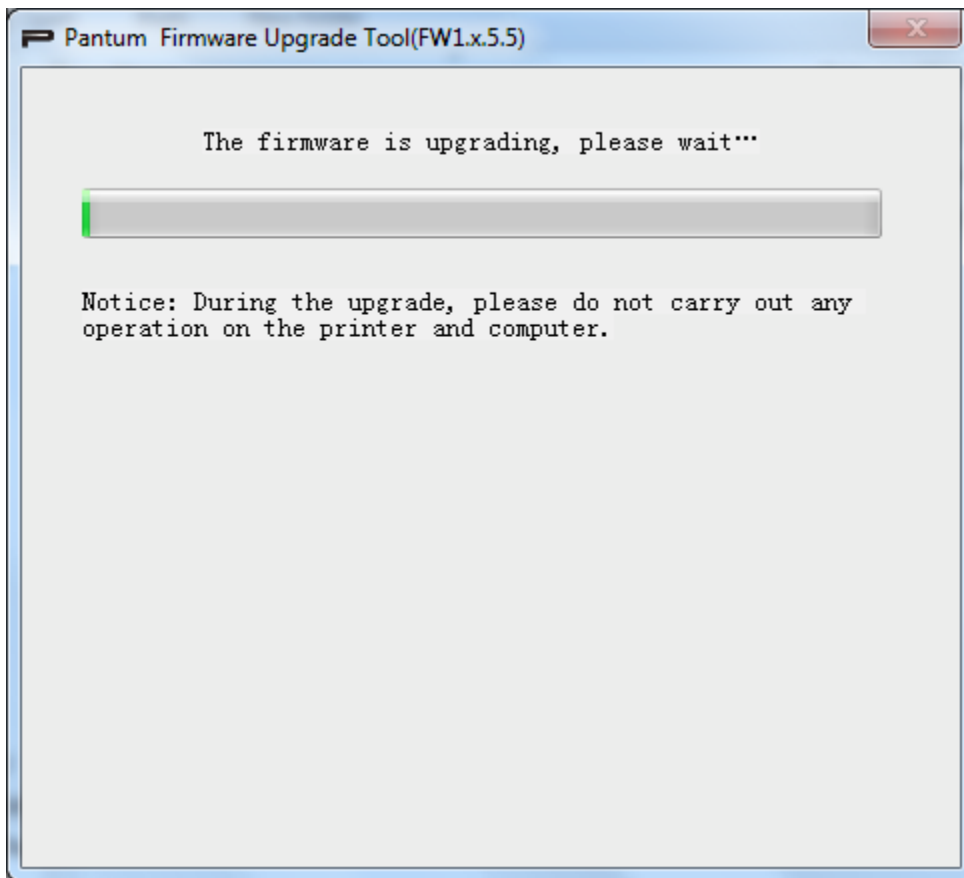
Notice: During the upgrade, please do not carry out any operation on the printer and computer.

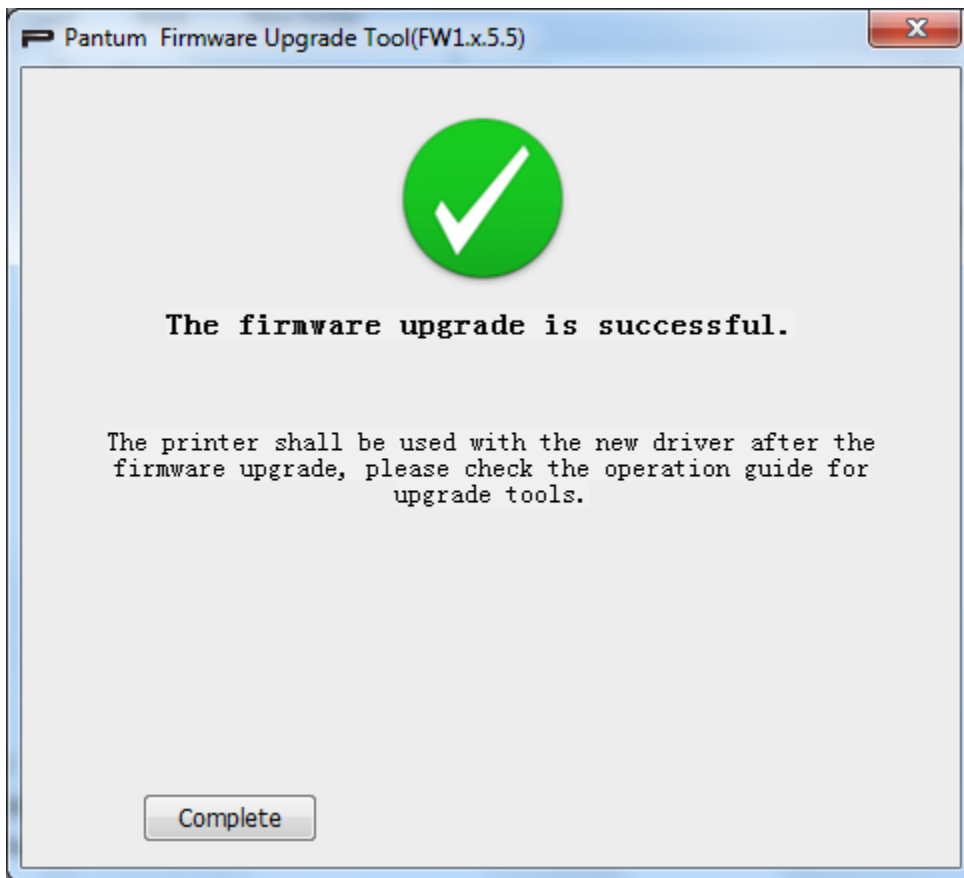




d) Press "cancel/continue" button to confirm the update on the printer

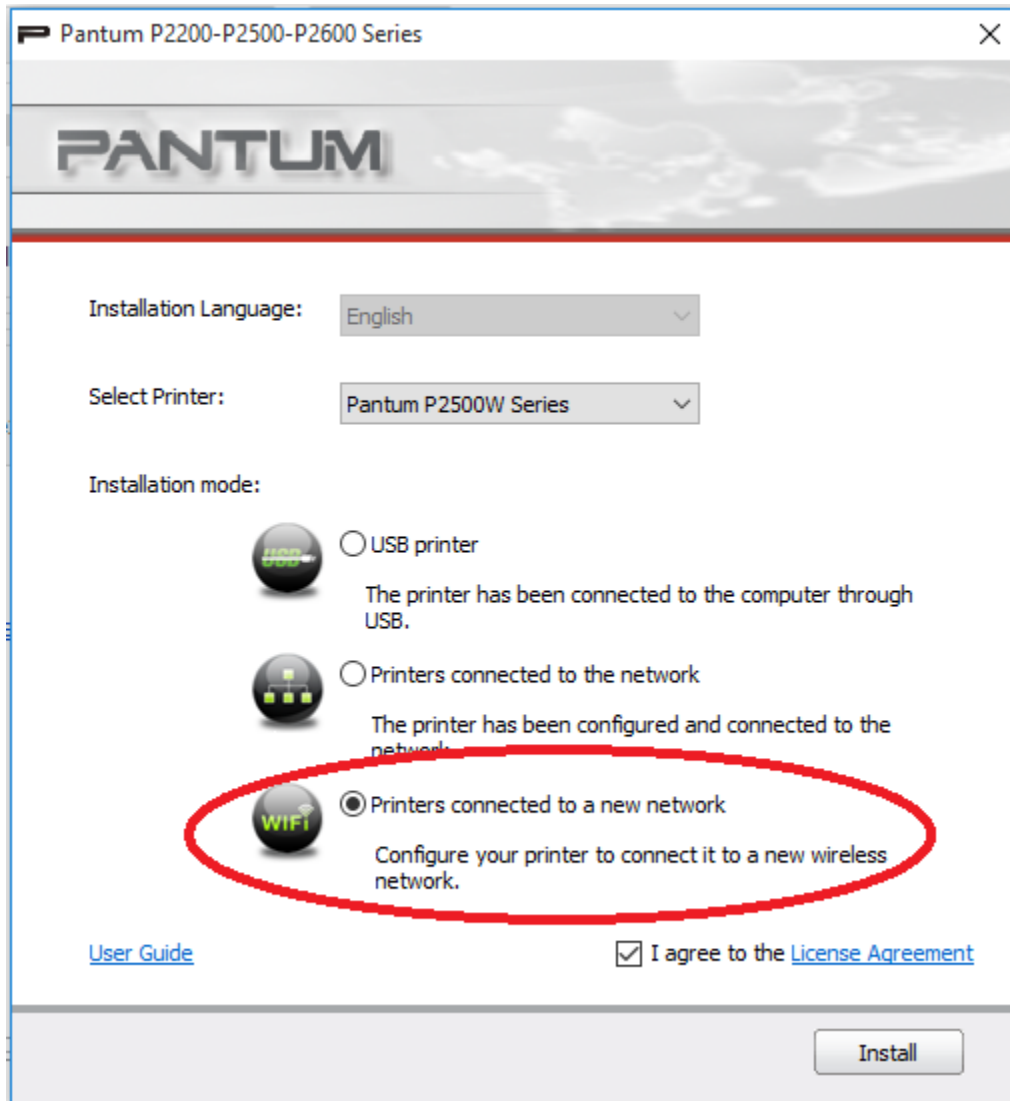






C. Install printer driver ,

a) Run CD to set up driver



The image shows a software installation window for Pantum P2200-P2500-P2600 Series. The window has a title bar with the text "Pantum P2200-P2500-P2600 Series" and a close button. Below the title bar is a header with the "PANTUM" logo. The main content area contains the following elements:

- Installation Language:** A dropdown menu set to "English".
- Select Printer:** A dropdown menu set to "Pantum P2500W Series".
- Installation mode:** Three radio button options:
 - ☐ **USB printer**
The printer has been connected to the computer through USB.
 - ☐ **Printers connected to the network**
The printer has been configured and connected to the network.
 - ☒ **Printers connected to a new network**
Configure your printer to connect it to a new wireless network.

The third option, "Printers connected to a new network", is highlighted with a red oval. At the bottom left, there is a link for [User Guide](#). At the bottom right, there is a checkbox labeled "I agree to the [License Agreement](#)". Below these is an "Install" button.

b) Select "Enter SSID Manually"

Pantum P2200-P2500-P2600 Series

PANTUM

You can click Print Wireless Network Information Page to print the list of wireless networks detected by the printer.

Service Set Identifier (SSID):

☒ Enter SSID Manually

Print Wireless Network Information Page

Next

Cancel

c) Input wireless name,click Next

Pantum P2200-P2500-P2600 Series

PANTUM

You can click Print Wireless Network Information Page to print the list of wireless networks detected by the printer.

Service Set Identifier (SSID):

Shopper + network

☒ Enter SSID Manually

Print Wireless Network Information Page Next Cancel

- d) 1) Safe Mode: Select « WPA/WPA2 »
- 2) Input Password
- 3) Click Next

Pantum P2200-P2500-P2600 Series

PANTUM

Verify the wireless credential and click Next.

Service Set Identifier (SSID):

Shopper + network

Safe Mode:

WPA/WPA2

Password:

☐ Show Password

Previous Next Cancel

- e) Click Done